



Summer 2023

THIS IS Living! NEWSLETTER

Kern County ADA Conference...	02
Consumer Success Story.....	03
Staff Highlight	
Staff Welcome	
Deaf Awareness.....	04
Deaf Community Day	
ASL Services & Resources	
Kern County ADRC	05
July Calendar	06
August Calendar	07
September Calendar	08
Plan in Advance Calendar	09
Assistive Technology	10
Agency Announcements.....	11

KERN COUNTY ADA CONFERENCE

JULY 26, 2023 | 8:30 AM - 3:00 PM



Mayor Karen Goh presenting at the 2022 Kern County ADA Conference.
ASL interpreter Jasmine Rubio interpreting beside the podium.

Join us at the
DoubleTree Hotel
for the Kern County ADA Conference

Highlights!

- Kern County ADA Conference
- Consumer Success Story
- Deaf Community Day





KERN COUNTY ADA CONFERENCE

RAFFLES | NETWORKING | VENDOR BOOTHS | FOOD & MORE!

July 26, 2023 | DoubleTree Hotel | 8:30 AM - 3:00 PM



Board of Directors and local dignitaries holding recognition awards during the 2022 Kern County ADA Conference.



2022 Kern County ADA Conference Guest Speaker Jan Garrett discusses ADA law.



SAVE YOUR SPOT!
Purchase your tickets
on [EventBrite.com](https://www.eventbrite.com)

GENERAL
ADMISSION **\$75.00**



A special thank you to our current sponsors!



#KernCountyADA

#ILCKC

#ThanksToTheADA

Consumer Success Story

Mrs. Cathy Smith learned about the Independent Living Center of Kern County (ILCKC) during ILCKC's Deaf Community Day held in September of 2022. Deaf Community Day invites local Deaf individuals to celebrate Deaf Awareness Day. Locals gather to enjoy this event that hosts local artwork, vendors, programs, and service providers.

At the event, Mrs. Smith received information about our Assistive Technology (AT) services. The following day, she contacted ILCKC to learn more about the services our AT Department offers. Mrs. Smith was in search of a rollator, a type of wheeled walker with a built-in seat and brakes. According to our Deaf Advocate, Martha Magana, Mrs. Smith struggles with walking, sitting, and standing due to her disability.

Martha assisted Mrs. Smith by placing her on the waiting list for our AT program. Mrs. Smith, was more than willing to wait. Not long after, Mrs. Smith got a call from ILCKC notifying her that a rollator was ready to be picked up. Out of excitement, Mrs. Smith picked up her rollator with brakes that very same day! She thanked ILCKC for the assistance she received.



Mrs. Smith with her new rollator is standing between Mr. Smith and Deaf Advocate Martha.

INDEPENDENT LIVING CENTER OF KERN COUNTY, EMPOWERING PEOPLE WITH DISABILITIES TO LIVE AS INDEPENDENTLY AS POSSIBLE!



Martha Magana, Deaf Advocate

Martha is a Deaf Mexican-American woman and is proud to be the new Deaf Advocate for Deaf and Hard of Hearing individuals at the Independent Living Center of Kern County (ILCKC). She received her Associate of Arts Degree in American Sign Language (ASL) and Communications from Bakersfield College and graduated from California State University, Bakersfield, with a Bachelor of Arts

degree in Communication. She is passionate about working with the Deaf and Hard of Hearing Community and can't wait to meet you all! If you see her around say Hi!

Welcome to the
ILCKC Team!

Rance Grigsby
Special Projects Provider

Nicole Zacarias
Public Policy Coordinator

DEAF COMMUNITY DAY

SEPTEMBER 27, 2023 | 6:00 PM - 8:00 PM

INDEPENDENT LIVING CENTER OF KERN COUNTY
5251 OFFICE PARK DRIVE, SUITE 200, BAKERSFIELD, CA 93309



Individuals visiting at a booth during Deaf Community Day

THE PURPOSE OF THIS EVENT IS TO CELEBRATE OUR DIVERSE COMMUNITY. WE WANT TO PROVIDE A SPACE FOR SHARING RESOURCES, SUPPORTING LOCAL TALENT, AND NETWORKING.

CELEBRATE WITH US!

Vendors will include: Amazon,
Bakersfield College Disabled Students
Programs & Services (BC-DSPS),
Bakersfield - Greater Los Angeles
Agency on Deafness, Inc. (BGLAD),
Department of Rehabilitation (DOR),
Local Artists & more!



2022 Deaf Community Day ILCKC booth with ASL Interpreter Stephanie Smart and Deaf Advocate Martha Magana.

ASL INTERPRETING SERVICES

The ILCKC Deaf and Hard of Hearing Services Department provides American Sign Language (ASL) interpreting services.

Qualified ASL interpreters partner with the community to meet a variety of needs for the Deaf, such as:

Government, City/County, Public Meetings or Events, Elections, Campaigns, Employee Interviews, Orientations, Trainings, Job Evaluations, Conferences, Workshops, Seminars, and more.



ASL Interpreters: Stephanie Smart, Jasmine Rubio, Alex Leyva and Deaf Advocate Martha Magana.

Did you know?

The ADA places responsibility for providing effective communication, including the use of interpreters, directly on covered entities.

Covered entities must provide aids and services when needed to communicate effectively with people who have communication disabilities. (ADA.gov)



**Connect with the Pacific ADA Center
Learn More About Accessibility**

(510) 831-6714 | Voice/Relay
(800) 949-4232 | Voice/TTY Toll-Free

Kern County Aging and Disability Resource Connection

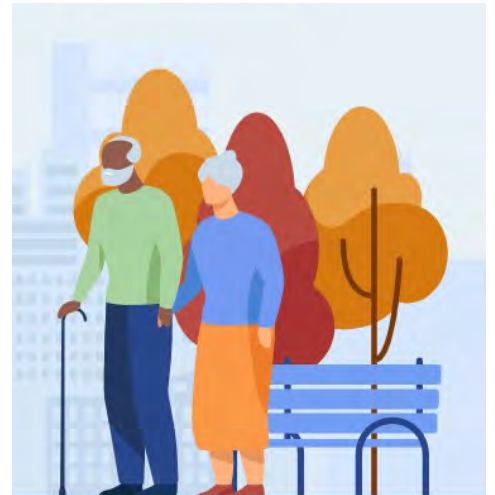
As more people search for Long-Term Services and Supports (LTSS) to find aging and disability-related resources, California Department of Aging has organized local agencies across California into Aging and Disability Resource Connections (ADRCs). ADRCs are coordinated networks that work to improve service delivery and help older adults, people with disabilities and caregivers navigate the complex LTSS system.

Kern County Aging and Adult Services and Independent Living Center of Kern County are working together to provide a coordinated system of information and access for all persons seeking LTSS. Kern County ADRC, along with its extended partner organizations, will minimize confusion on navigating systems and processes, enhance individual choice, and support informed decision-making.

Organizations and agencies that provide services for aging or disability populations in Kern County can register at no cost to be listed as KC-ADRC service providers by calling

(661) 325-1063 or emailing ADRC@ilcofkerncounty.org

KC-ADRC



Kern County Aging and Disability Resource Connection (KC-ADRC)

[ABOUT](#)[CONTACT US](#)[NEWS AND UPDATES](#)[FIND RESOURCES](#)

The KC-ADRC website includes information on KC-ADRC and links to an interactive database of service providers in Kern County that provide aging and disability resources. Individuals who are unable to visit KC-ADRC's website can request personalized support by calling: [\(661\) 868-1000](tel:(661)868-1000) or toll free [1\(800\) 510-2020](tel:1(800)510-2020).

Scan the QR code or visit: <https://kerncountyardrc.org/contact/>



Find the help you're
searching for



Navigate complex systems
and processes



Discover new resources you
didn't know existed

July 2023

Independent Living Center of Kern County

Sunday	Monday	Tuesday	Wednesday	Thursday	Friday	Saturday
						1
2	3	4	5	6	7	8
9	10	11	12	13	14	15
16	17	18	19	20	21	22
23	24	25	26	27	28	29
30	31					

USA Independence Day | Tuesday, July 4th

Office will be closed all day in observance.

Independent Living Skills | Understanding Computers

Wednesday, July 12th | 2:00 PM - 3:00 PM

Team Advocacy | Becoming an Advocate

Monday, July 17th | 2:30 PM - 3:30 PM

Kern County ADA Conference at the DoubleTree Hotel

Wednesday, July 26th | 8:30 AM - 3:00 PM

Kern County ADA Conference



RAFFLES | NETWORKING
VENDOR BOOTHS | FOOD & MORE!



256 654 8249 **Zoom ID**

+1 669 900 9128 **US Dial-In**

Join by scanning the QR code!

Hybrid classes are available!

Office 5251 Office Park Drive, Suite 200, Bakersfield, CA 93309

[Zoom address link:](https://us02web.zoom.us/j/2566548249)

<https://us02web.zoom.us/j/2566548249>

August 2023

Independent Living
Center of Kern County

Sunday	Monday	Tuesday	Wednesday	Thursday	Friday	Saturday
		1	2	3	4	5
6	7	8	9	10	11	12
13	14	15	16	17	18	19
20	21	22	23	24	25	26
27	28	29	30	31		

Independent Living Skills | How to Navigate Your Phone

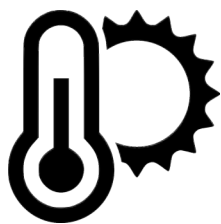
Wednesday, August 9th | 2:00 PM - 3:00 PM

Team Advocacy | Community Concerns

Monday, August 14th | 2:30 PM - 3:30 PM

Informal Peer Support | Prepare for the Heat

Wednesday, August 23rd | 2:00 PM - 3:00 PM



Prepare for the Heat

Wednesday, August 23rd
2:00 PM - 3:00 PM

How to Navigate Your Phone

Wednesday, August 9th
2:00 PM - 3:00 PM



256 654 8249 **Zoom ID**

+1 669 900 9128 **US Dial-In**

Join by scanning the QR code!

Hybrid classes are available!

Office 5251 Office Park Drive, Suite 200, Bakersfield, CA 93309

Zoom address link:

<https://us02web.zoom.us/j/2566548249>

September 2023

Independent Living
Center of Kern County

Sunday	Monday	Tuesday	Wednesday	Thursday	Friday	Saturday
					1	2
3	4	5	6	7	8	9
10	11	12	13	14	15	16
17	18	19	20	21	22	23
24	25	26	27	28	29	30

Labor Day | Wednesday, September 4th

Office will be closed all day in observance.

Independent Living Skills | Be your own Advocate w/ Health Services

Wednesday, September 13th | 2:00 PM - 3:00 PM

Team Advocacy | Collaborate

Monday, September 18th | 2:30 PM - 3:30 PM

Deaf Community Day

Wednesday, September 27th | 6:00 PM - 8:00 PM

5251 Office Park Drive, Suite 200

Deaf Community Day

Wednesday, September 27th

6:00 PM - 8:00 PM



256 654 8249 **Zoom ID**

+1 669 900 9128 **US Dial-In**

Join by scanning the QR code!

Hybrid classes are available!

Office 5251 Office Park Drive, Suite 200, Bakersfield, CA 93309

Zoom address link:

<https://us02web.zoom.us/j/2566548249>

Plan in advance - take a look ahead!

OCTOBER 2023

Su	M	T	W	T	F	Sat
1	2	3	4	5	6	7
8	9	10	11	12	13	14
15	16	17	18	19	20	21
22	23	24	25	26	27	28
29	30	31				

NOTES

11/10 - Office will be closed in observance
of Labor Day

11/23 & 11/24 - Office will be closed in
observance of Holidays

DECEMBER 2023

Su	M	T	W	T	F	Sat
					1	2
3	4	5	6	7	8	9
10	11	12	13	14	15	16
17	18	19	20	21	22	23
24	25	26	27	28	29	30
31						

NOTES

NOVEMBER 2023

Su	M	T	W	T	F	Sat
			1	2	3	4
5	6	7	8	9	10	11
12	13	14	15	16	17	18
19	20	21	22	23	24	25
26	27	28	29	30		

NOTES

12/25 & 12/26 - Office will be closed in
observance of the Holidays

Assistive Technology

What is Assistive Technology? How can Assistive Technology help?

Assistive Technology (AT) is defined as devices, durable medical equipment (DME), rehabilitating devices, and other tools to improve one's quality of life. AT assists people with disabilities (PWD) and individuals with access and functional needs (AFN) to live as independently as possible in order to obtain the best quality of life.

Our AT program is available free of charge. We offer computer skills specific to individual needs.

AT classes are held by appointment.
Contact us to sign up!

AT Repair and Re-Use

Within our AT department, we offer a **Repair and Re-Use** program. Repair & Re-Use program offers pre-owned equipment* such as wheelchairs, new shower benches, new to lightly-used crutches and walkers.

**Based on availability.*

We accept donations!

Within our AT department, we accept donations for items that are lightly used, in good condition, and have the potential to be *Repaired and Re-Used!*

Call **(661) 325 -1063** to connect with our AT Department regarding ILCKC's Repair and Re-Use program to inquire about available equipment for your specific needs.



**Please Submit Feedback,
Questions, or Comments:**

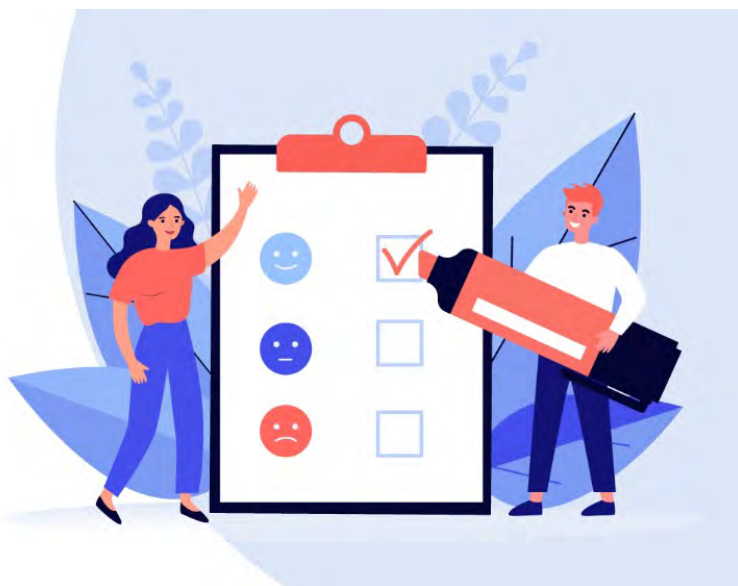
info@ilcofkerncounty.org

Phone | (661) 325 - 1063

Videophone | (661) 369 - 8966

or visit our website

www.ilcofkerncounty.org



Donate to ILCKC Today!

**Independent Living Center of
Kern County** 🌟

Visit Online: www.ilcofkerncounty.org/donations/

OR scan the code!



Make this a monthly donation



Donate with PayPal

Donate with Debit or Credit Card

ILCKC appreciates your continued support!



Disability Disaster Access & Resources

A program of the California Foundation
for Independent Living Centers (CFILC)

Disability Disaster Access & Resources (DDAR)



Visit online: disabilitydisasteraccess.org/ **or** scan the QR code

Ready for a power outage emergency?

DDAR provides necessary resources to people with disabilities affected by Public Safety Power Shutoffs (PSPS)

The Independent Living Center of Kern County



**5251 Office Park Drive, Suite 200
Bakersfield CA 93309**

Office | (661) 325 - 1063

Fax | (661) 325 - 6702

Toll-Free | (800) 529 - 9541

Video Phone | (661) 369 - 8966

Email | info@ilcofkerncounty.org

Website | www.ilcofkerncounty.org



@ilckc



@ilc_kc



@ILCKC

#ILCKC - Connect with us!



5251 Office Park Drive
Suite 200
Bakersfield, CA 93309



Consumer

Address

Kern County, CA

Summer 2023 Newsletter - This is Living!